

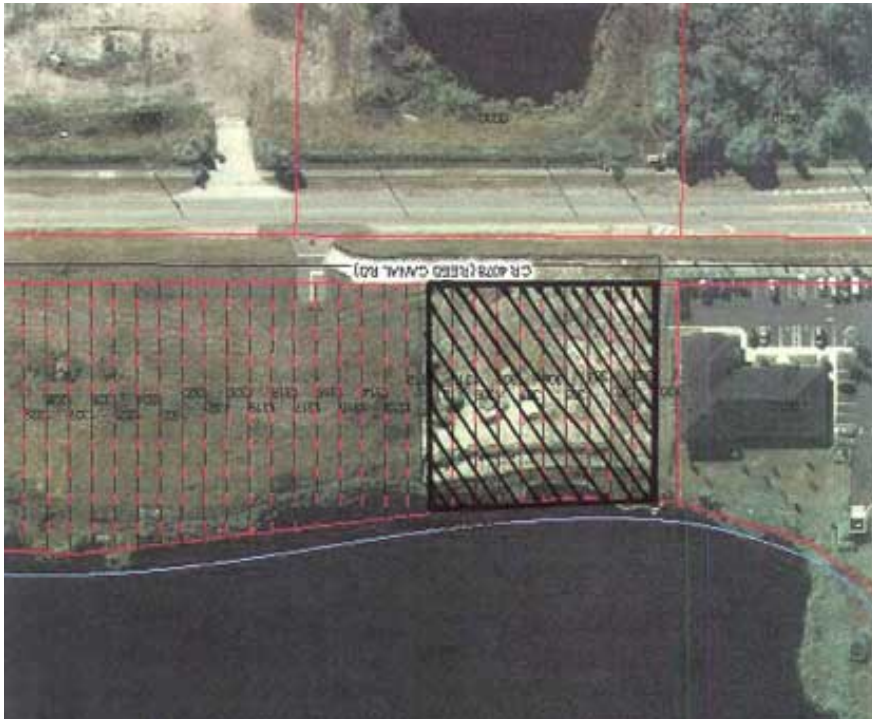


SELBY REALTY

Brokers ♦ Managers ♦ Developers

Vacant Land FOR SALE

1430 Reed Canal Road * Port Orange, Florida
Ideal for Medical/Professional/Retail



Property Details:

Address: 1430 Reed Canal Road, Port Orange, FL 32129

Lot Size: 38,400 sf

Price REDUCED: \$349,000

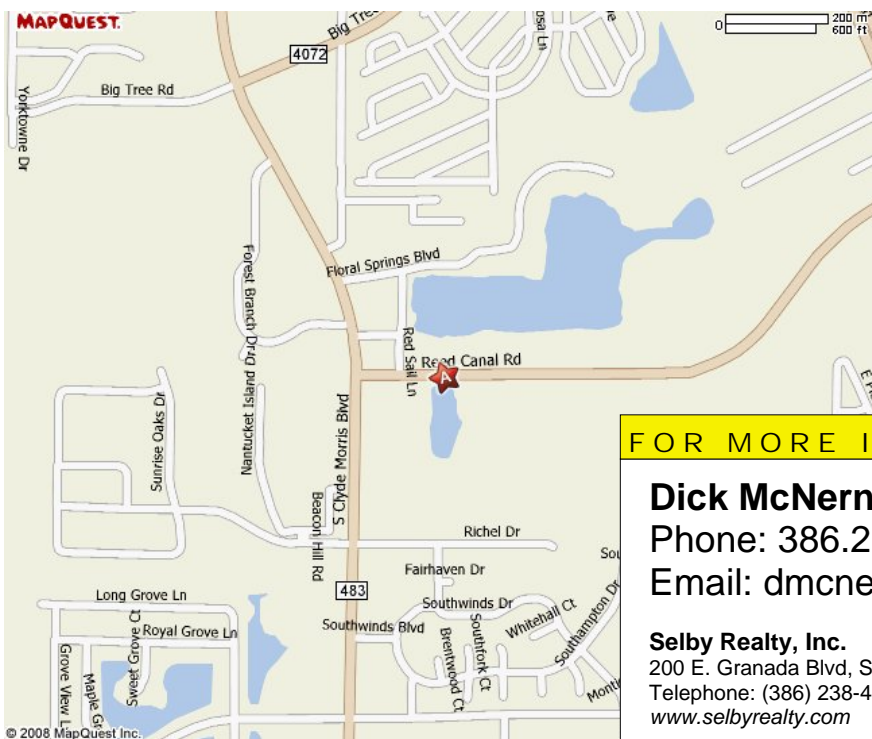
Property ID:
31-15-33-15-00-1301

Other Information:
Parcel #'s 31-15-33-15-00-1301 through 31-13-33-15-00-1310

Zoned: Medical Professional

Description: Multiple parcels comprising approximately 38,400 sf. Sale includes a development order for a 6,998sf building.

Location: 1,000 yards northeast of Clyde Morris Boulevard on Reed Canal Road.



FOR MORE INFORMATION CALL:

Dick McNerney

Phone: 386.238.4456, ext. 305

Email: dmcnerney@selbyrealty.com

Selby Realty, Inc.

200 E. Granada Blvd, Suite 200 | Ormond Beach, FL 32176
Telephone: (386) 238-4456 | Fax: (386) 238-8377
www.selbyrealty.com