



SELBY REALTY

Brokers • Managers • Developers

Vacant Land - Industrial Condo Site FOR SALE

PRICE REDUCED!

2395 Bellevue Avenue Extension Units F & G * Daytona Beach

Property Details:

Address: 2395 Bellevue Avenue Extension Units F & G, Daytona Beach, FL 32114

Lot Size: 2.5

Building Size: Can build 9,000sf and 11,500sf industrial condos.

Parcel IDs: 39-15-32-54-00-00F0 & 00G0

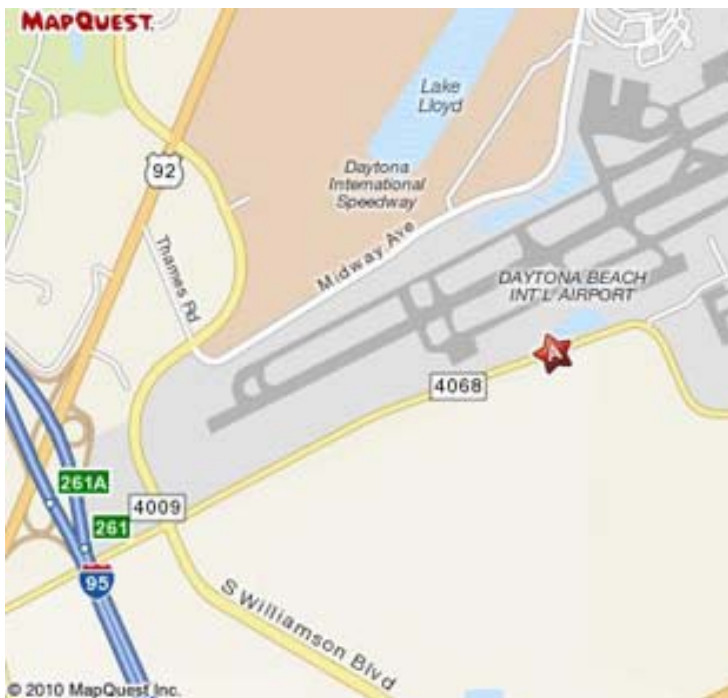
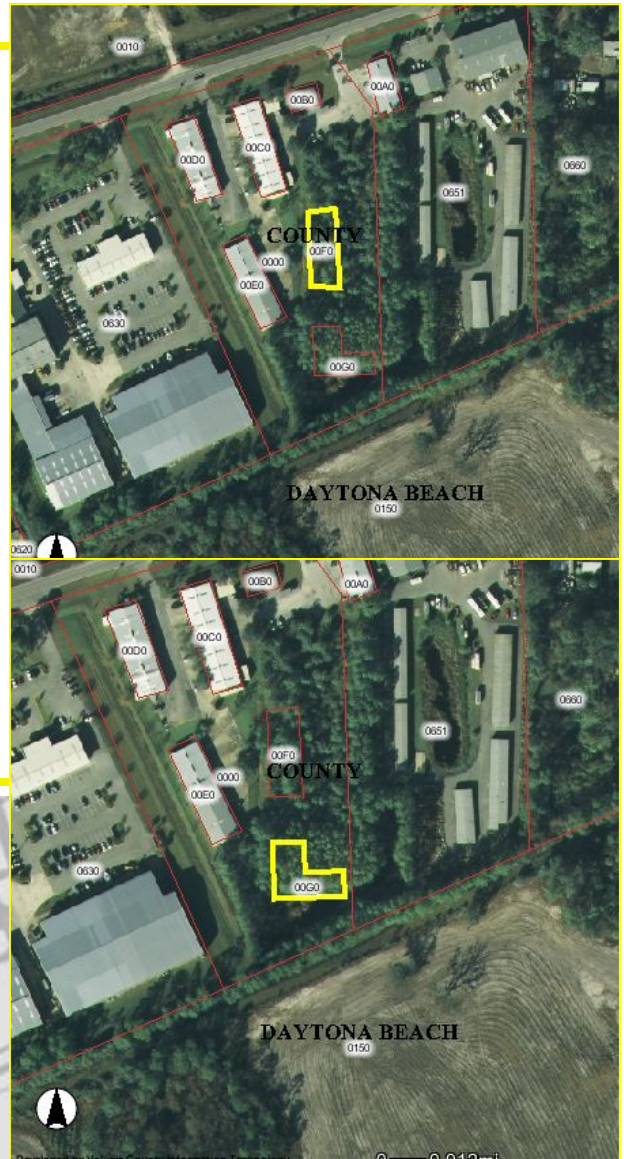
Zoning: Light Industrial

Price:

Unit F: 9,000 SF = \$139,900

Unit G: 11,500 SF = \$179,900

Description: Two commercial lots. Can build 9,000sf and 11,500sf industrial condos. Lots may be sold individually. Choice location — adjacent to airport.



FOR MORE INFORMATION CALL:

Dick McNerney

Phone: 386.238.4456, ext. 305

Selby Realty, Inc.

200 E. Granada Blvd, Suite 200 | Ormond Beach, FL 32176
Telephone: (386) 238-4456 | Fax: (386) 238-8377
www.selbyrealty.com

Information is collected from sources deemed reliable; however, not warranted by the Seller or Selby Realty, Inc. Subject to errors, omissions, change of terms, price withdrawal, or prior sale without notice. Interested parties must conduct their own investigations to reach an investment decision. Property is being sold in "As Is, Where Is" condition with Seller making no representations or warranties.