



SELBY REALTY

Brokers ♦ Managers ♦ Developers

Office/Retail Space FOR LEASE

3100 S. Ridgewood Avenue, Unit 160 * South Daytona , FL
2,004 SF Office/Retail Space



Property Details:

Address: 3100 S. Ridgewood Ave., Unit 160, South Daytona, FL 32119

Available SF: 2004 sf of Office or Retail Space in Unit 160.

Description: 2004 sf space on first floor of building. This suite features large plate glass windows, which provide abundant natural light. A private entrance and restroom make this the perfect place to do business. On the south side of the building. Ample parking. New roof. Join Food Supply, Americrown, Boone Distributors, Century Forest Products and SE Panel as the next great tenant in this multi-tenant facility.

Permitted Uses: PCD zoning allows virtually all permitted uses in City of South Daytona. View the PCD Agreement on our website at www.selbyrealty.com.

Location: On Ridgewood Ave. (U.S. 1) ¼ mile north of Dunlawton Ave. or 3 ½ miles south of Beville Road (Rt. 400) turn west onto Venture Drive. The 3100 S. Ridgewood building is straight ahead one block west of US 1.

Rent: Please call for pricing.

Net Charges: Taxes, Insurance and Common Area Maintenance are \$1.20 psf. Water and sewer are included. Tenant pays electric.



FOR MORE INFORMATION CALL:

Dwight Selby, CCIM

Phone: 386-238-4456 ext. 304

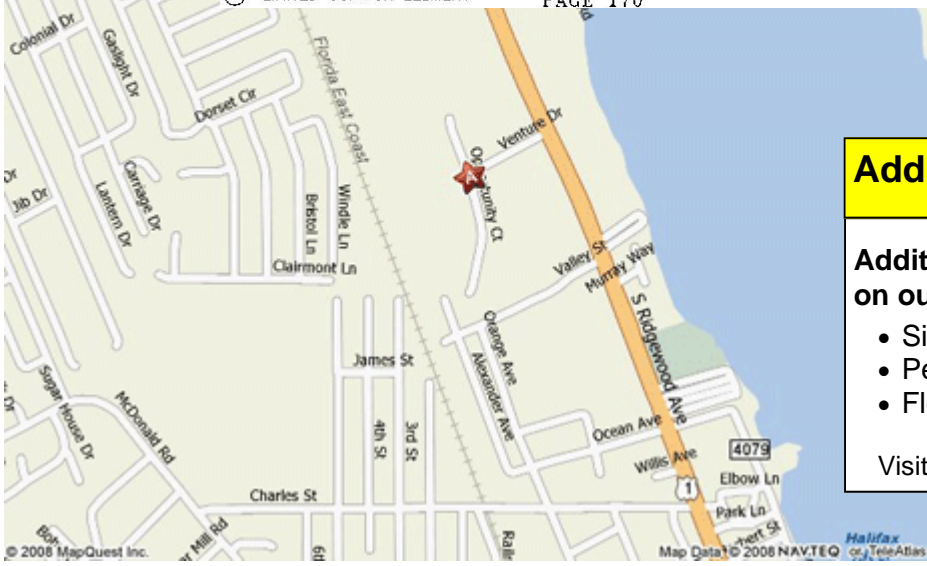
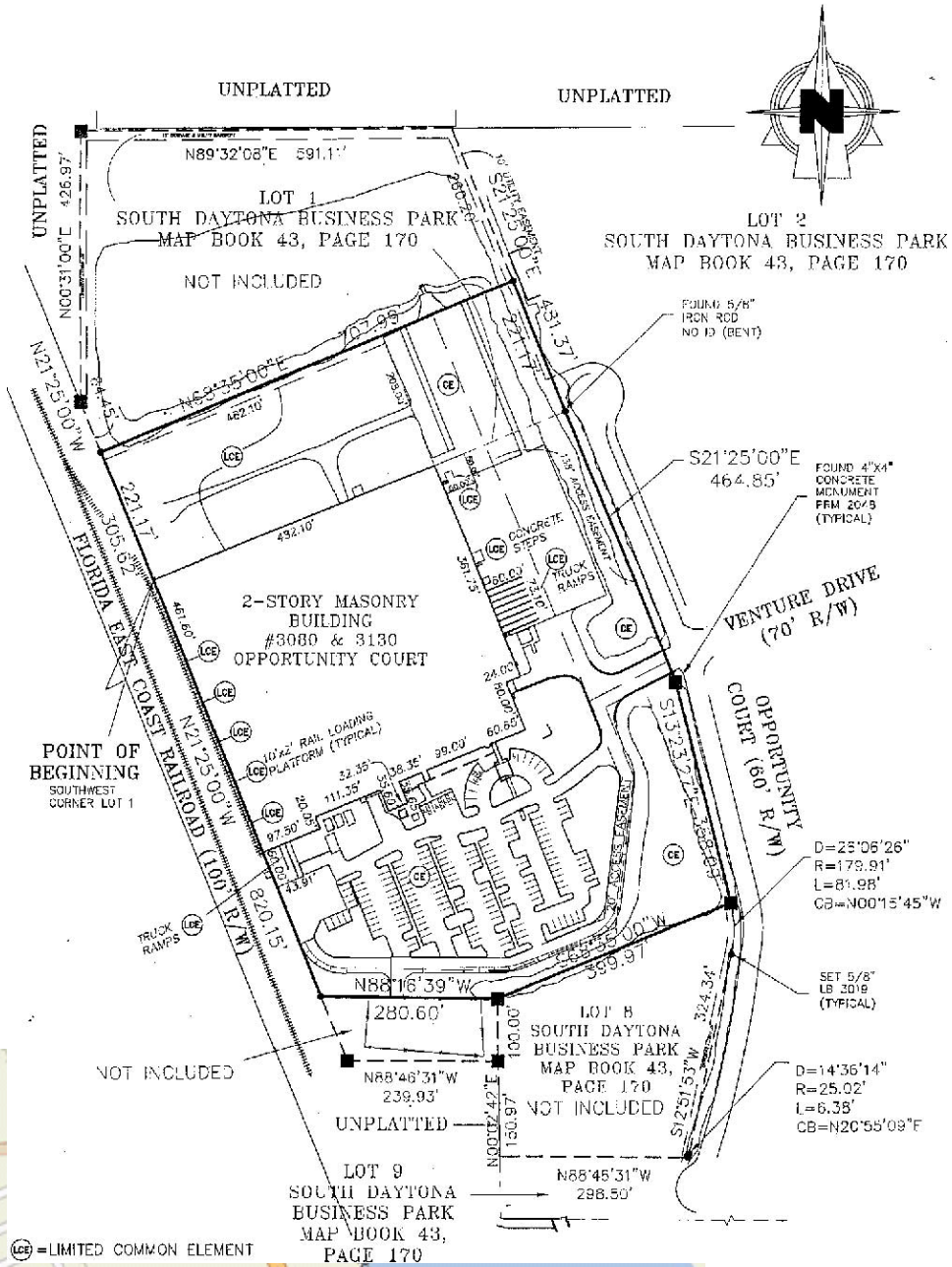
Email: dselby@selbyrealty.com

Selby Realty, Inc.

200 E. Granada Blvd, Suite 200 | Ormond Beach, FL 32176

Telephone: (386) 238-4456 | Fax: (386) 238-8377

www.selbyrealty.com



(LCE) = LIMITED COMMON ELEMENT

Additional Information

Additional documentation available on our website:

- Siteplan
- Permitted Uses (PCD Agreement)
- Floorplan

Visit www.SelbyRealty.com