



# SELBY REALTY

Brokers • Managers • Developers

## Vacant Land FOR SALE

### Corner of N. Orchard Street and Sterthaus Drive Ormond Beach, FL

#### Property Details:

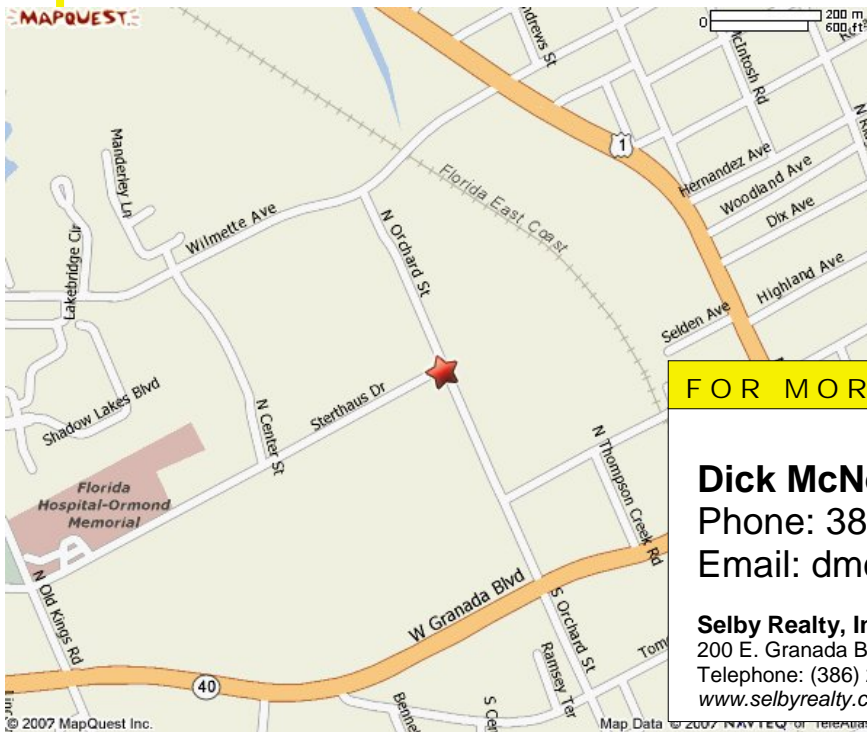
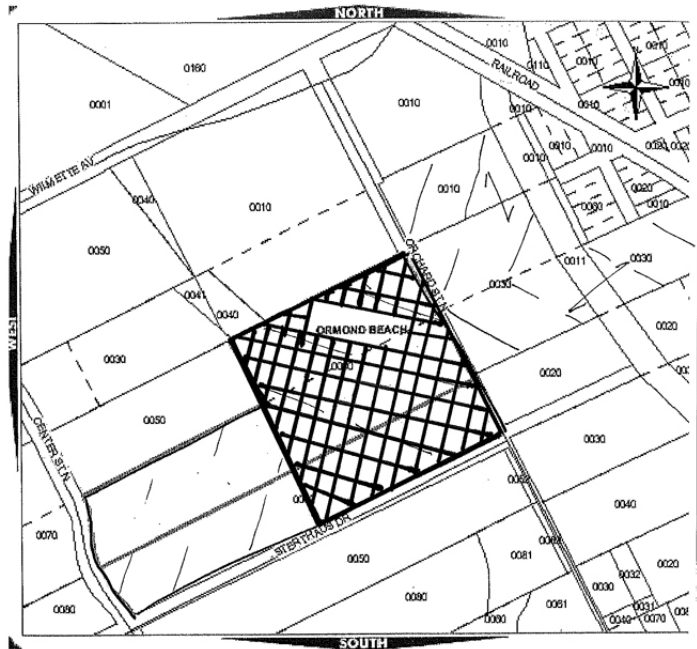
**Location:** Corner of N. Orchard and Sterthaus Drive, Ormond Beach, FL 32174

**Lot Size:** +/-12.5 Acres

**Sale Price:** \$500,000

**Property ID:** 41143201040040  
and a portion of  
41143201040060

**Zoned:** LI



**Description:** Corner lot located near Florida Memorial Hospital in Ormond Beach

FOR MORE INFORMATION CALL:

**Dick McNerney**

Phone: 386.679.5037

Email: [dmcnerney@selbyrealty.com](mailto:dmcnerney@selbyrealty.com)

**Selby Realty, Inc.**

200 E. Granada Blvd, Suite 200 | Ormond Beach, FL 32176

Telephone: (386) 238-4456 | Fax: (386) 238-8377

[www.selbyrealty.com](http://www.selbyrealty.com)