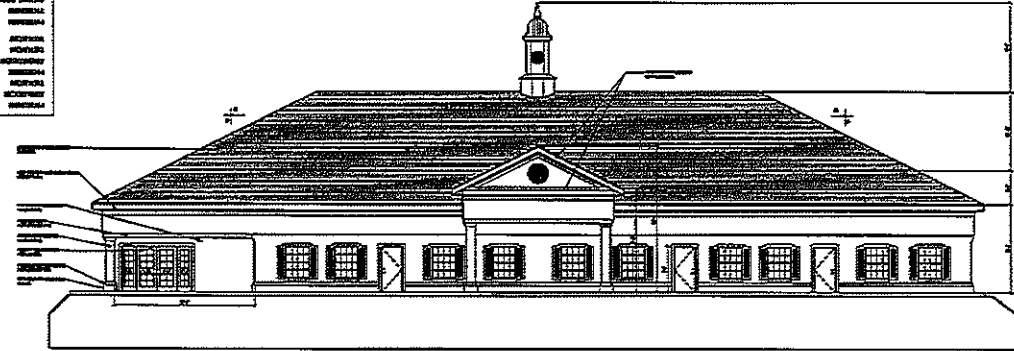


**FRONT ELEVATION**  
SCALE: 1/8" = 1'-0"



**REAR ELEVATION**  
SCALE: 1/8" = 1'-0"

**TYPICAL BUILDING CODES/SCHEDULE**

DESCRIPTION	CRONENBERG/CODING
ARCHITECTURE	1/2" x 1/2"
STRUCTURE	1/2" x 1/2"
MECHANICAL	1/2" x 1/2"
ELECTRICAL	1/2" x 1/2"
PLUMBING	1/2" x 1/2"
PAINTING	1/2" x 1/2"
GLASS	1/2" x 1/2"
ROOFING	1/2" x 1/2"
LANDSCAPE	1/2" x 1/2"
ENVIRONMENTAL	1/2" x 1/2"
ENERGY	1/2" x 1/2"
ACCESSIBILITY	1/2" x 1/2"
MARKETING	1/2" x 1/2"
OTHER	1/2" x 1/2"

**ELEVATION NOTES:**  
1) EXPOSED JOINTS ARE FINISHED ACCORDING TO THE PORTLANDLAND DEVELOPMENT CODE.

**NOTES:**  
1) ALL DIMENSIONS ARE TO FACE UNLESS OTHERWISE NOTED.  
2) ALL DIMENSIONS ARE TO FACE UNLESS OTHERWISE NOTED.  
3) ALL DIMENSIONS ARE TO FACE UNLESS OTHERWISE NOTED.  
4) ALL DIMENSIONS ARE TO FACE UNLESS OTHERWISE NOTED.  
5) ALL DIMENSIONS ARE TO FACE UNLESS OTHERWISE NOTED.  
6) ALL DIMENSIONS ARE TO FACE UNLESS OTHERWISE NOTED.  
7) ALL DIMENSIONS ARE TO FACE UNLESS OTHERWISE NOTED.  
8) ALL DIMENSIONS ARE TO FACE UNLESS OTHERWISE NOTED.  
9) ALL DIMENSIONS ARE TO FACE UNLESS OTHERWISE NOTED.  
10) ALL DIMENSIONS ARE TO FACE UNLESS OTHERWISE NOTED.

**A BUILDING ELEVATIONS**  
SCALE: 1/8" = 1'-0"  
(2) VIEWS

**SHOPES AT CRYSTAL LAKE**  
PROPERTY OWNER: MERRILL TRUST COMPANY, CRYSTAL LAKE, ILL. 60144  
PROJECT LOCATION: UNITED CAVAL ROAD, FORT CHARGES, ILLINOIS COUNTY, IL 62111  
GENERAL CONTRACTOR: JACOBS GROUP, INC., 3111 N. W. 100th Ave., Fort Lauderdale, FL 33309

**BPE**  
DESIGN INCORPORATED  
ARCHITECTS  
1000 N. W. 100th Ave., Suite 100  
Fort Lauderdale, FL 33309  
Phone: (954) 571-1111  
Fax: (954) 571-1112  
www.bpe.com

DATE: 02.14.17

**BUILDING ELEVATIONS**

SHEET: A8

