

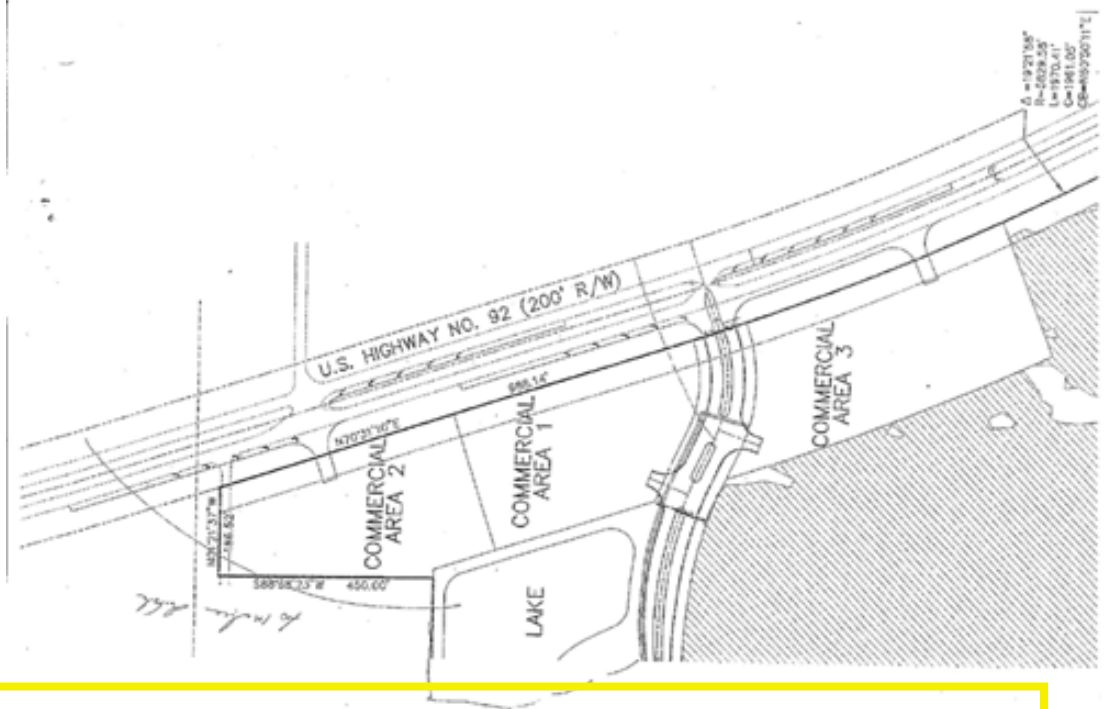


# SELBY REALTY

Brokers ♦ Managers ♦ Developers

## Vacant Land FOR SALE

10.82 Acres on W. Int'l Speedway Blvd. \* Daytona Beach, FL



### Property Details:

**Address:** W. International Speedway Blvd.,  
Daytona Beach 32124

**Lot Size:** 10.82 acres

**Asking Price:** \$2,500,000

**Property ID:** 6205-00-00-0068

**Zoned:** Planned Commercial Development

**Description:** Outparcels are located at Daytona RV Luxury Resort. A 173 Acre facility, 480 space resort featuring an activity center, pool, clubhouse/ pavilion, and other amenities. Great Location for convenience store or restaurant to compliment existing RV Resort.

**Location:** Just off the I-4 Ramp, the site is 4 miles from Daytona Int'l Speedway and 1 mile from LPGA World Headquarters.

**Comments:** City Water and City Sewer will be available.

**Three outparcels  
totaling 10.82 acres**

**Can be subdivided!**

FOR MORE INFORMATION CALL:

**Dwight Selby, CCIM**

Phone: 386.238.4456, ext. 304

Email: [dselby@selbyrealty.com](mailto:dselby@selbyrealty.com)

**Selby Realty, Inc.**

200 E. Granada Blvd, Suite 200 | Ormond Beach, FL 32176

Telephone: (386) 238-4456 | Fax: (386) 238-8377

[www.selbyrealty.com](http://www.selbyrealty.com)